

NEW

„ICECUBE“



### Cold Dip IceCube – The new luxury cold plunge pool

- cold plunge pool with solid acrylic glass edging (height: 230 mm, thickness: 20 mm)
- pool shell made of epoxy acrylate with smooth surface
- 5 steps and floor all with slip resistant surface
- stainless steel handrail, electropolished
- overflow channel on all four sides
- transparent PVC gutter grate (standard)
- 2 qty channel drains (diam. 63 mm) with water trap
- brass main drain 1 1/2" with anti-vortex cover
- adjustable support frame incl. 2 step supports
- LED underwater lighting (ice-blue) with built-in niche and control box

Outer dimensions: L x W x H: 220 x 220 x 137 cm

Depth: 117 cm

Capacity: 1.800 l

Weight: 240 kg (incl. glass edging)

plain white

A 2 012 103 **13.193,28**

plain silver-grey

A 2 012 124 **14.453,78**

**Designer grille** made of milled, transparent, solid acrylic, transparent upper side and frosted base 27 x 2,0 cm (W x H) on all four sides, not mitred

A 2 012 130 **1.352,94**

**Air and wave** 2 qty venturi nozzles with open air suction, pump (0,75 kW - 230 V) and 2 qty suction fittings, not switched

A 2 012 150 **722,69**

**Gutter lighting LED**, ice-blue, 4 x 35 W

A 2 012 160 **1.563,03**

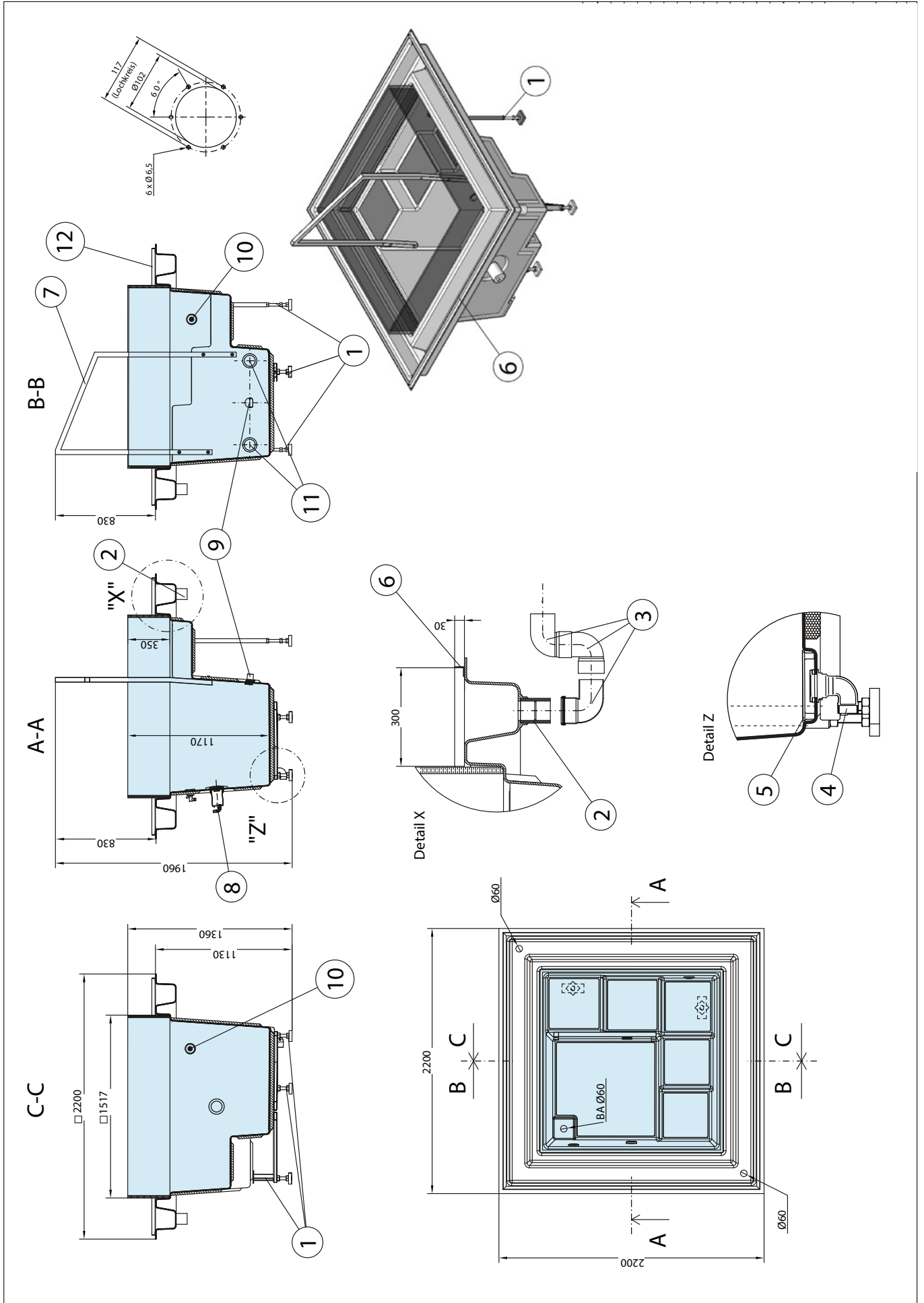
#### Freight charges on request



**Sales price in Euro excl VAT.**  
Price list valid until 31/12/2016.

Date: 05.02.2016

**RivieraPool®**



Date: 05.02.2016